

Feeling Safe

This painting represents CatholicCare's commitment to ensuring they are a culturally safe place for the Aboriginal and Torres Strait Islander community. CatholicCare commissioned the artist, Emma Bamblett, who is a Wemba Wemba woman from Echuca on the Murray River.



Respect: The small coloured sections symbolise the respect CatholicCare has towards Aboriginal and Torres Strait Islander people, land & culture.



Increasing representation of Aboriginal and Torres Strait Islander people: The people represent different clans who bring different experiences & cultural knowledge. The green lines reaching out represent a safe place of learning & opportunities for staff.



Journey & stories: The footprints represent journey and stories of staff working within the community, learning & sharing.



Raising awareness of history & culture, and celebrating & promoting reconciliation: The clap sticks represent sharing stories, song & dance. The people represent Aboriginal and Torres Strait Islander people working together, sharing knowledge. The circle with the lines reaching out represents reconciliation & respect.



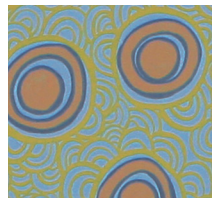
High quality program & service delivery: The circles represent CatholicCare, and the curved lines connecting the circles represent strength & building resilience.



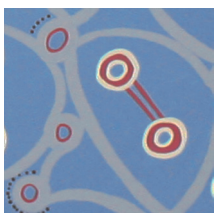
Advocacy for economic, social & educational inclusion of Aboriginal and Torres Strait Islander people: The different coloured people represent our workers. The lines coming from them represent speaking up, building community confidence to speak up & raising community awareness.



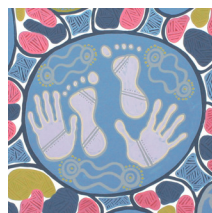
Building & maintaining respectful relationships: The connections the lines are making represent learning, growing & maintaining a relationship with other organisations, families & individuals.



Acknowledgment to local cultural values, practices & protocols: The green lines represent how we will work with local communities & grow those working relationships.



Accessible programs & services: The circles represent accessible programs & services that we deliver by connecting to the community.



Culturally safe place for Aboriginal & Torres Strait Islander community: The hands & footprints represent a mark of respect & working together. The lines connecting the circles represent a strong foundation for advocating, enhancing & delivering quality services & supports to the Aboriginal and Torres Strait Islander community.